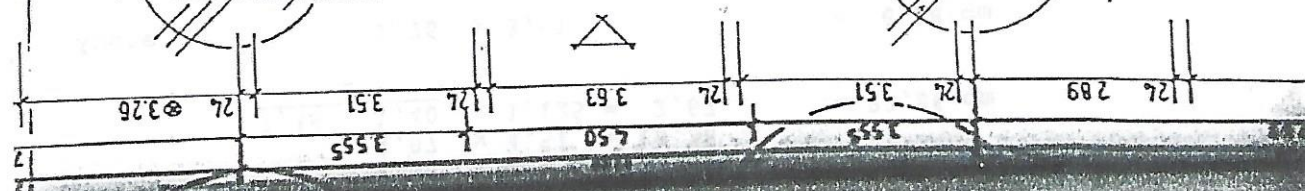
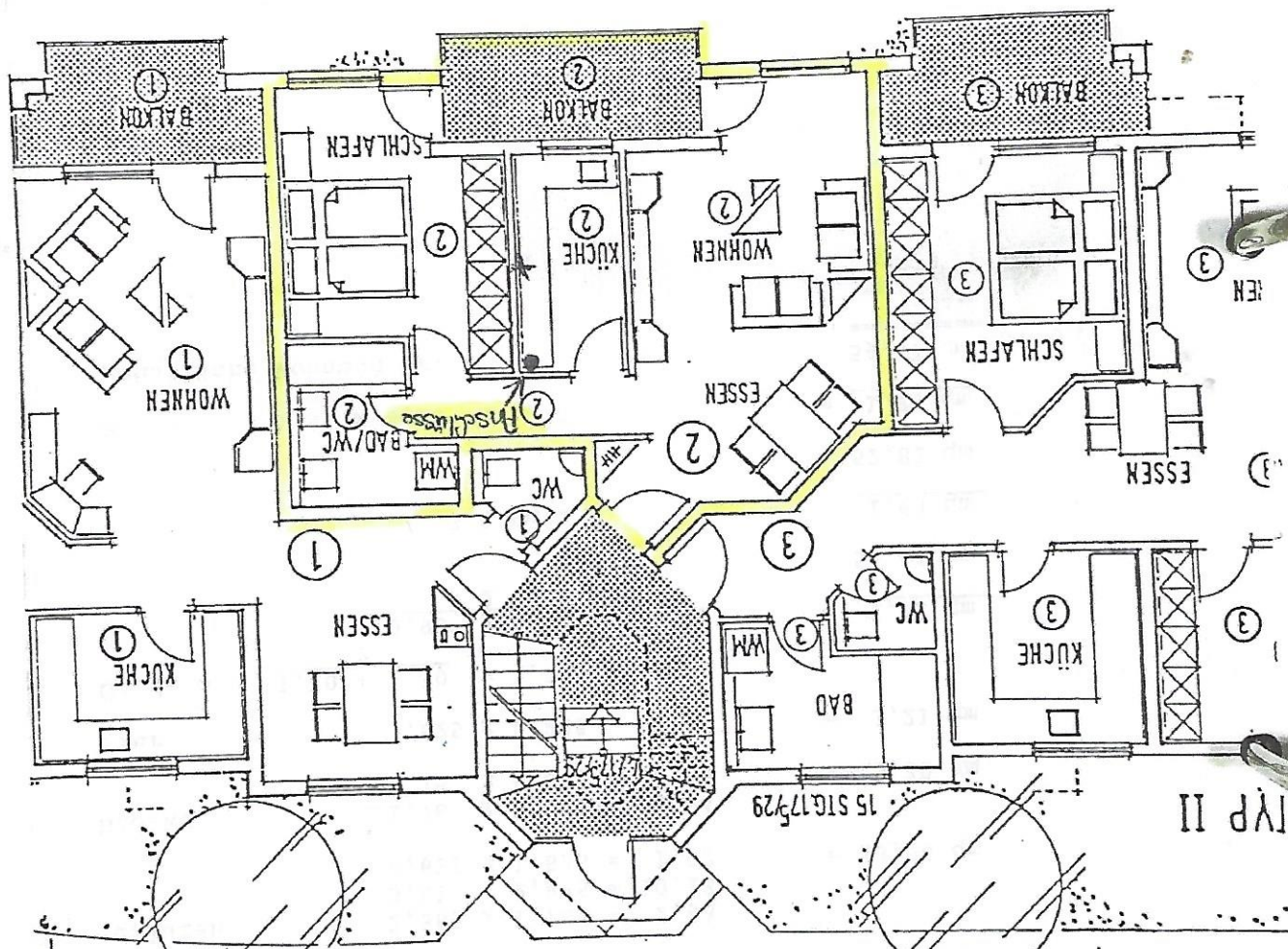
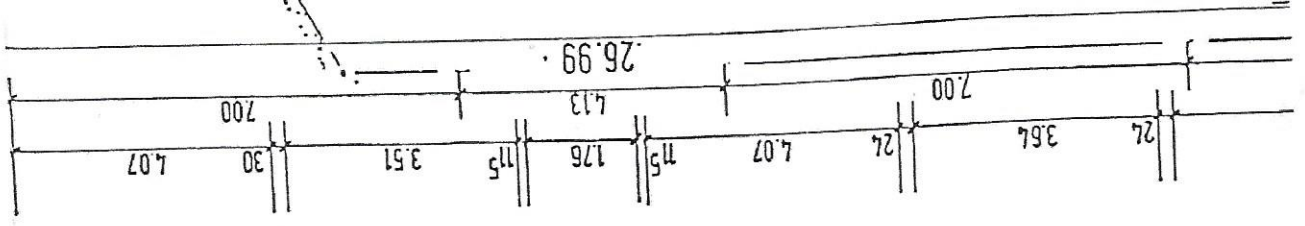


X 21/100 f L 2550



TYP II

Kopie

- 2 -

2 1/2 Zimmer-Wohnung Nr. 2

Wohnen/Essen

$$\begin{array}{r} 2,385 \times 1,185 = 2,83 \\ 4,07 \times 4,51 = 18,36 \\ \underline{3,35 + 1,40} \times 1,125 = 2,67 \\ 2 \end{array} \quad = 23,86 \text{ qm}$$

Küche  $1,76 \times 3,51 = 6,18 \text{ qm}$

Schlafen  $2,385 \times 1,185 = 2,83$   
 $3,51 \times 2,885 = 10,13$   
 $0,625 \times 1,635 = 1,02$  = 13,98 qm

Bad/WC  $1,76 \times 2,635 = 4,64$   
 $0,75 \times 0,885 = 0,66$  = 5,30 qm

Flur  $3,625 \times 0,885 = 3,21 \text{ qm}$

Garderobe  $\frac{1,10 + 1,30}{2} \times 1,25 = 1,50$   
 $\frac{0,90 \times 0,90}{2} = 0,41$  = 1,91 qm

54,44 qm

./. 3 % Putz

1,63 qm

52,81 qm

Balkon  $1/4^2 \times 4,13 \times 1,70 = 1,76 \text{ qm}$

Wohnfläche Wohnung Nr. 2

54,57 qm 56,33